

Essential III

FlexiRange

Pro-Ject



33

45



Essential III FlexiRange

E III	4
E III Phono	6
E III SB	8
E III Bluetooth	10
E III Digital	12
E III RecordMaster	14



What is FlexiRange?

In the pursuit of perfection, choices must be made. What is important, what is not needed. Pro-Ject, the world leader in audiophile turntables, has created a product line with six distinct configurations that lets you decide which features are important to you. Therefore there are no compromises in the quality of the components and you can choose the configuration that suits you best, paying only for the features you want.

All models of FlexiRange are based on the standard version of Essential III and share the same basic features. They come with a factory aligned Ortofon OM10

cartridge, which is mounted to a one-piece aluminum tonearm. The chassis and the platter are made from acoustically neutral MDF which guarantees high class performance.

We have built models with switchable line or phono output, electronic speed control or even high resolution USB LP ripping. There is also a version with a digital output to send ones and zeros to an external D/A converter or soundbar and we have even designed a model with Bluetooth streaming. There is a model for every living room...

Essential III

Essential III is the audiophile entry-level turntable. It delivers a lively, balanced and highly involving sound that will delight every vinyl lover.

Shown with Pro-Ject Speaker Box 5 and Pro-Ject MaiA.



direct
phono-level
output

switchable
line or phono
output

Essential III Phono

Essential III Phono takes all of the advantages of the regular Essential III and adds a line-level output! Delivering audiophile sonics in a convenient package, this model is easy to install into any hi-fi system and can hook up to practically any pre-existing amplifier in your living or listening room.

Shown with Pro-Ject Speaker Box 5 and Pro-Ject Stereo Box S2.

Essential III SB

Essential III SB is the one to choose when it comes to comfort. It's for the audiophile that has multiple 12" LPs and 7" singles and likes to flip through them with ease. Essential III SB allows the listener to change speeds with the push of a single button.

**33/45
electronic
speed
selector**



Essential III Bluetooth

This turntable is for the modern audiophile who wants to combine vinyl with the liberty of taking their music around wherever they want to. The sound of your favourite tracks can be sent to your Bluetooth headphones, speakers or a Bluetooth-enabled DAC. For ease of use, Essential III Bluetooth also features two different analogue outputs (phono out and line out).

Shown with Pro-Ject Stereo Box S2 BT.

**switchable
line or phono
output**

**wireless
turntable
with phono
pre-amp**

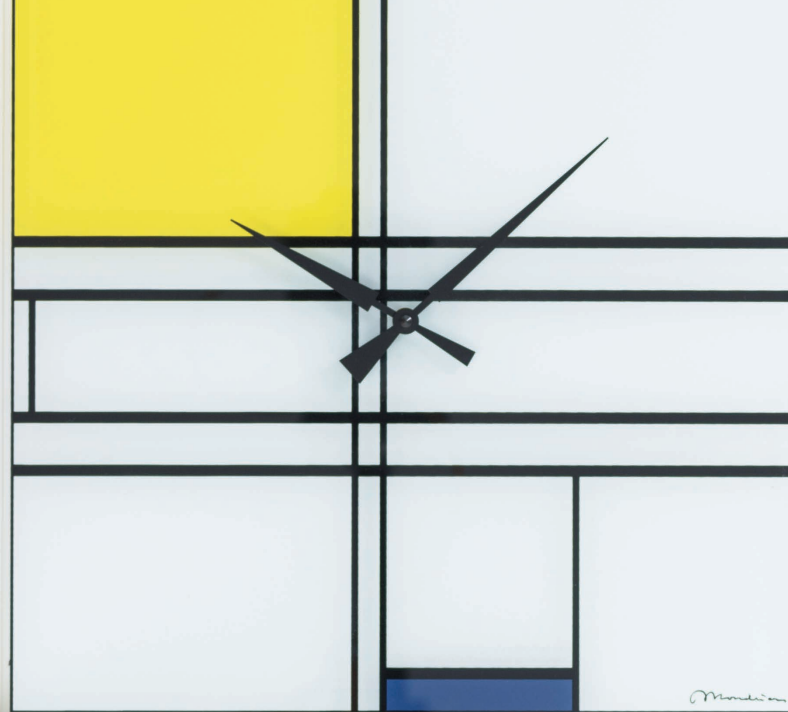
**built-in
Bluetooth
transmitter**



hi-res
optical digital
output

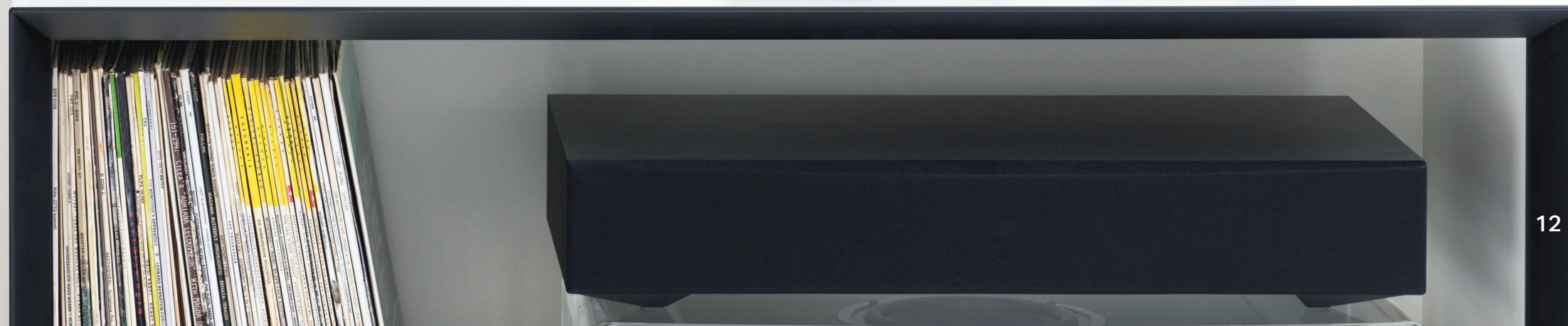
special
optical digital
output for
sonos™

switchable
line or phono
output



Essential III Digital

Delivering its owner the unmatched comfort of a turntable that not only handles analogue playback, but also converts their favourite LPs to a digital data stream via its optical output. A perfect match to connect to your multi-room entertainment system, a soundbar or even a TV!





switchable
line or phono
output

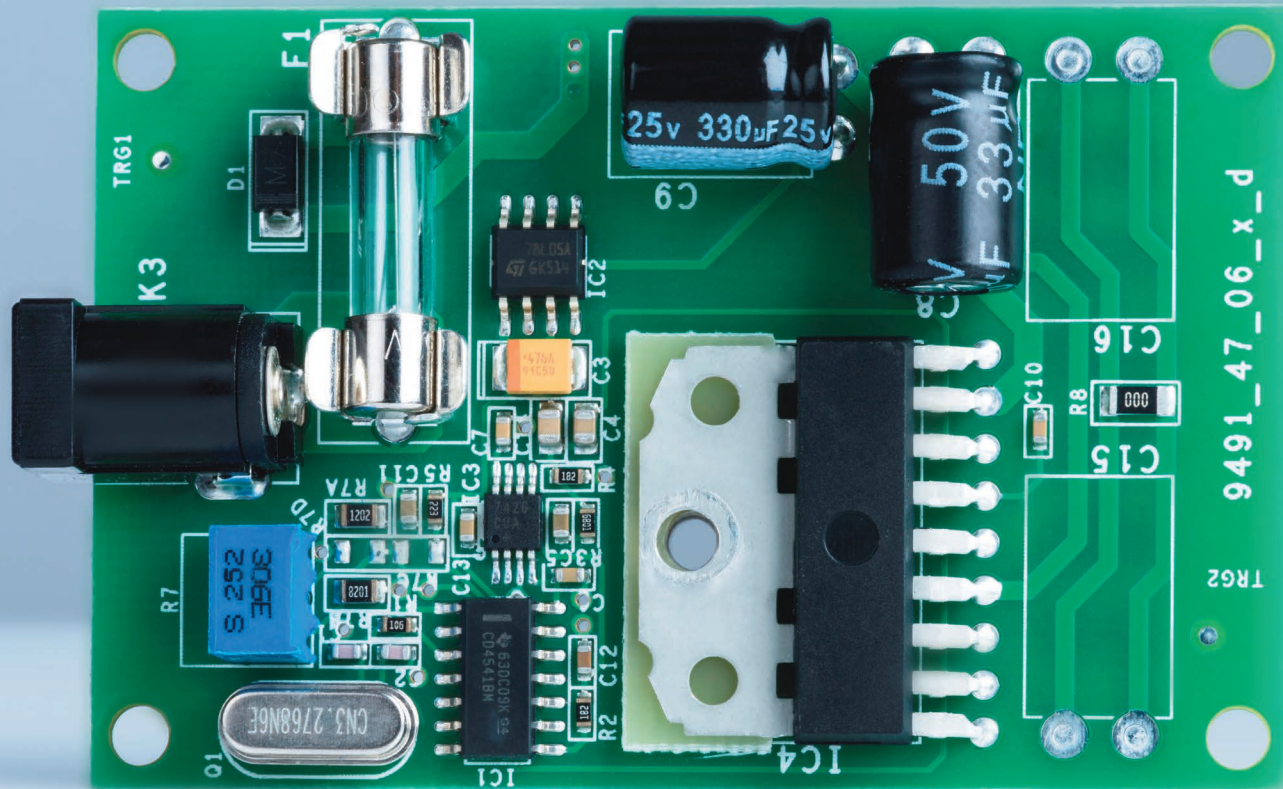
33/45
electronic
speed
selector

Essential III RecordMaster

RecordMaster is the turntable for listeners who want to digitize all of their treasures for listening pleasure on the go! Simply connect your Essential III RecordMaster to a PC or Mac and record with the provided software. You can record your vinyl in high resolution formats up to 24bit/192kHz, making sure you catch all the love packed into a 12" LP or 7" single!



built-in
USB output for
recording on
PC/Mac



Built-in DC-powered motor control:
ultimate speed stability with minimized speed drift

Technical Specs

Nominal speeds: 33/45 RPM

Drive principle: belt drive

Wow and flutter: at 33 RPM: 0.70 %, at 45 RPM: 0.60 %

Speed drift: at 33 RPM: ± 0.21 %, at 45 RPM: ± 0.19 %

Platter: 300mm MDF

Main platter bearing spindle: stainless steel

Tonearm: 8.6", aluminum

Cartridge: Ortofon OM10

Effective arm length: 218.5mm

Effective tonearm mass: 8.0 grams

Suitable for cartridge mass: 3-5.5 grams

Tracking force: 0-25mN (recommended for OM10 18mN)

Power consumption: maximum 4.5 watts

Accessories included: power supply, dust cover, Connect-It E, felt mat

Dimensions (W x H x D): 420 x 112 x 330mm

Weight: 5.0 kg net

Essential III



pre-
mounted
Connect it E

Phono



switchable
line or phono
output

SB



high quality
gold-plated RCA
sockets

Bluetooth



switchable line
or phono output and
built-in Bluetooth
transmitter

Digital



switchable line
or phono output and
hi-res optical digital
output


RecordMaster



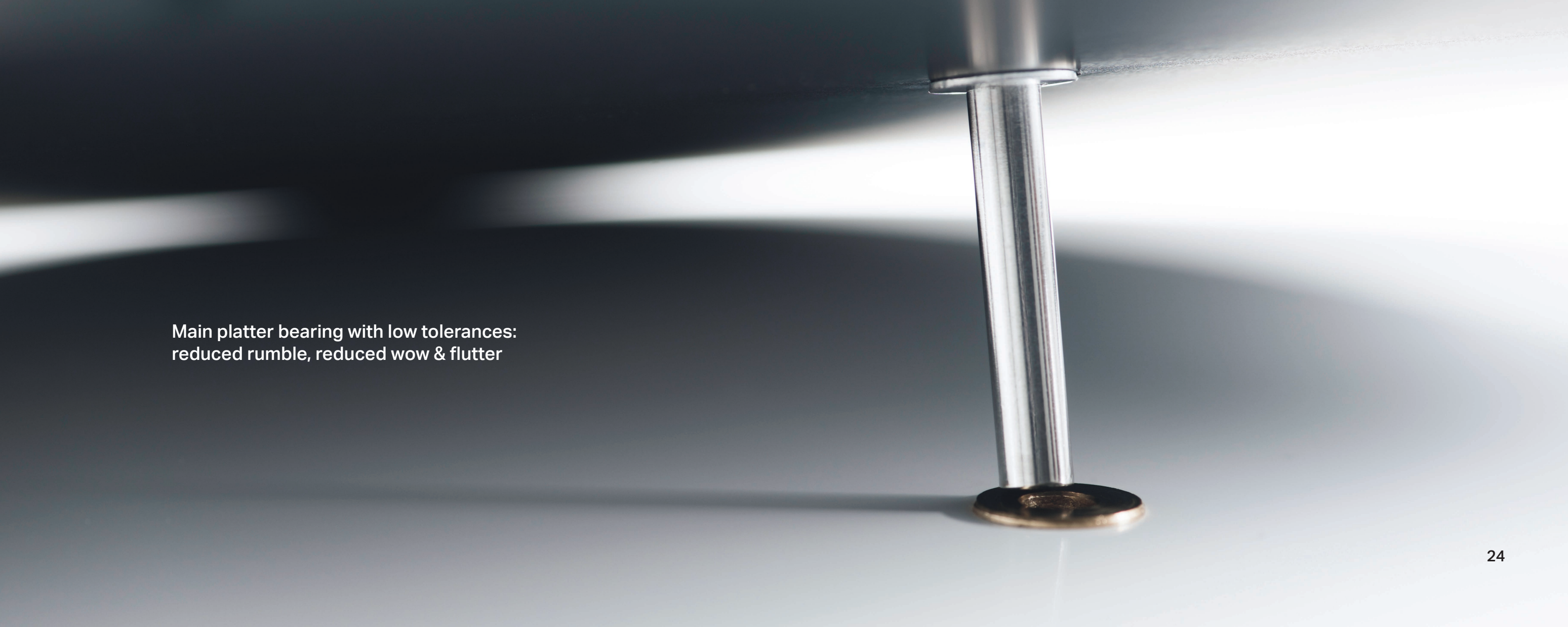
switchable line
or phono output and
built-in USB
output

One piece 8.6" aluminum tonearm with sapphire bearings







Anti-skating weight for accurate tracking and low distortion



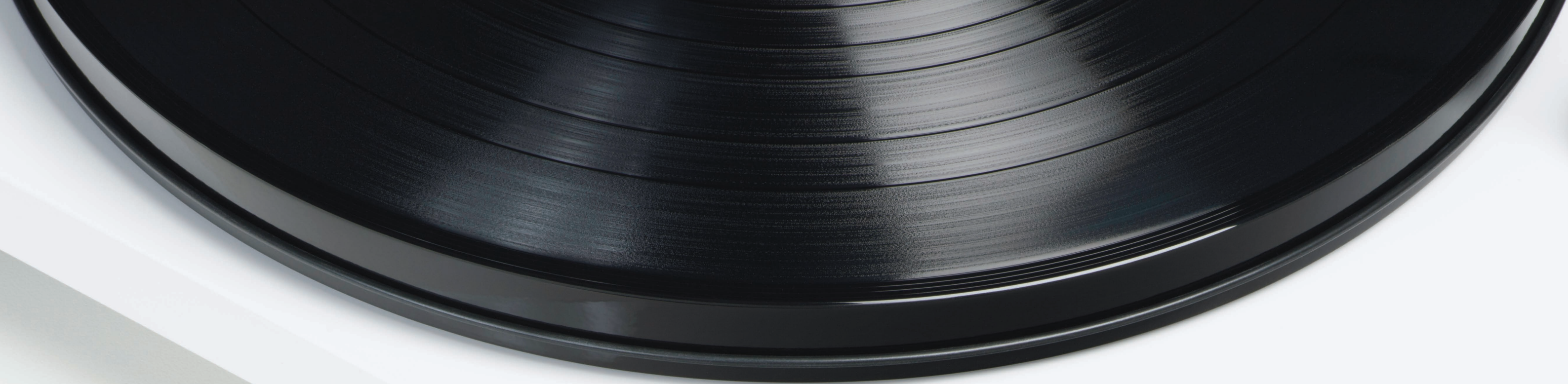
Main platter bearing with low tolerances:
reduced rumble, reduced wow & flutter



Diamond-cut aluminum drive pulley:
precise power transmission



Special decoupling feet eliminate
mechanically induced noise



Chassis & platter are made from low-resonance
MDF: medium-density fibreboard is stronger and
much denser than particle board



Dust cover, felt mat and
Connect-it E included

Pro-Ject

Produced in Europe.

www.project-audio.com

[instagram.com/projectaudiosystems](https://www.instagram.com/projectaudiosystems)

www.facebook.com/PJ.Audio.Systems



www.project-audio.com



**Designed and produced
in Europe.**