



# ESSENTIAL III PHONO

The audiophile entry-level turntable with integrated phono stage

MSRP 399 € (incl. VAT)

High gloss color options: 

- Belt drive with synchronous motor and silicone belt
- Integrated MM phono stage
- Diamond cut aluminium drive pulley
- Chassis & platter made of resonance in-sensitive MDF
- Integrated DC-powered motor control minimizes motor vibration and guarantees speed stability
- Low tolerance platter bearing with stainless steel spindle
- 8,6" aluminium tonearm with sapphire bearings
- Ortofon OM10 cartridge pre-mounted
- High-quality semi-balanced Connect it E phono interconnect with gold-plated RCA connectors included
- Special decoupling feet
- Dust cover included

**Speed:** 33, 45 (manual speed change)  
**Drive principle:** belt drive  
**Wow and flutter:** 33: 0,21% 45: 0,19%  
**Speed variance:** 33: 0,70% 45: 0,60%  
**Platter:** 300mm MDF  
**Main platter bearing spindle:** stainless steel  
**Tonearm:** 8,6", aluminium  
**Effective arm length:** 218,5 mm  
**Overhang:** 22,0mm  
**Effective tonearm mass:** 8,0 gr  
**Suitable cartridge mass:** 3 - 5,5g  
**Tracking force:** 0 - 25mn (recommended for OM10 18mn)  
**Included accessory:** power supply, dust cover, felt mat  
**Power consumption:** 4,5 watts max  
**Dimensions (lid closed):** 415 x 112 x 335mm (WxHxD)  
**Dimensions (lid open, 90°):** 415 x 365 x 390mm (WxHxD)  
**Weight:** 5,0 kg net



HG piano



HG red



HG white

## Essential III Phono - integrating convenience

Essential III Phono takes all advantages of the regular version Essential III and adds line level output! Delivering audio-ophile sonics in a convenient package, easy to install into any hifi system and to hook up to an already existing amplifier in your living or listening room. It comes with the same audiophile components as the

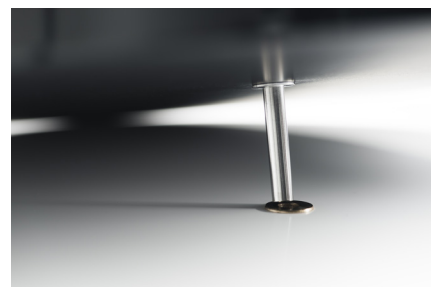
standard version, such as the diamond-cut aluminum drive pulley, the resonance-optimized MDF main platter and MDF chassis. The refined, high-precision platter bearing has significantly lower tolerances than Essential II. Equipped with the high-quality pickup OM10 by the phonographic cartridge pioneer Ortofon, Essential III Phono delivers lively, balanced and highly involving sound that will delight every vinyl lover.



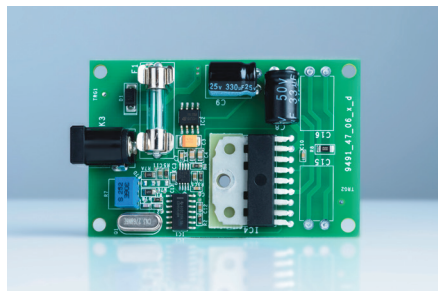
One piece 8.6" aluminum tonearm  
Cartridge: Ortofon OM10



Diamond-cut aluminum drive pulley:  
precise power transmission



Main platter bearing with low tolerances:  
reduced rumble, reduced wow & flutter



Built-in DC-powered motor control: better  
speed stability with minimized speed drift



Dust cover, felt mat and high quality  
connection cable Connect-it E included



Switchable line or phono output