



INSTRUCTIONS FOR USE
Pro-Ject USB Box

Dear music lover,

thank you for purchasing a PRO-JECT AUDIO USB Box.

In order to achieve maximum performance and reliability you should study these instructions for use carefully.



Warning of a hazard for the user, the unit or possible misuse.



Important notice.

PRO-JECT is a Registered Trademark of H. Lichtenegger.

This guide was produced by: Audio Trade GmbH
Copyright © 2008. All rights reserved.

The information was correct at the time of going to press. The manufacturer reserves the right to make changes to the technical specification without prior notice as deemed necessary to uphold the ongoing process of technical development.

Service

Should you encounter a problem which you are not able to alleviate or identify despite the above information, please contact your dealer for further advice. Only when the problem cannot be resolved there should the unit be sent to the responsible distributor in your country.

Warranty



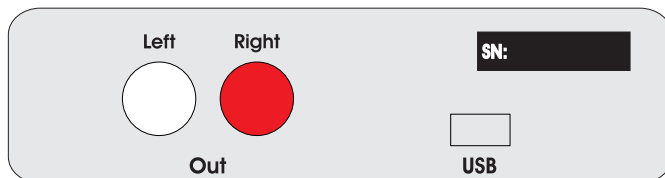
The manufacturer accepts no responsibility for damage caused by not adhering to these instructions for use. Modification or change to any part of the product by unauthorized persons release the manufacturer from any liability over and above the lawful rights of the customer.

Technical specifications Pro-Ject USB Box

Line-level output:	1 pair RCA/Phono sockets
Output voltage:	0,775Vrms
A/D converter:	16-Bit Delta Sigma
Sampling rate:	44,1kHz
USB-input:	digital serial data protocol USB 1.1
Operating systems:	Windows™ und Mac OS™
Dimensions (W x H x D):	103 x 38 x 141mm
Weight:	540g

Connection to the amplifier

Connect the **Out** socket to a line input (such as **AUX**) on your amplifier.



Make all connections whilst the USB Box is disconnected from the computer.

Take care to connect the left and right channels correctly. The right channel is usually marked red, the left channel black or white.

Connecting to a Computer (e. g. with Microsoft™ Windows™ XP)

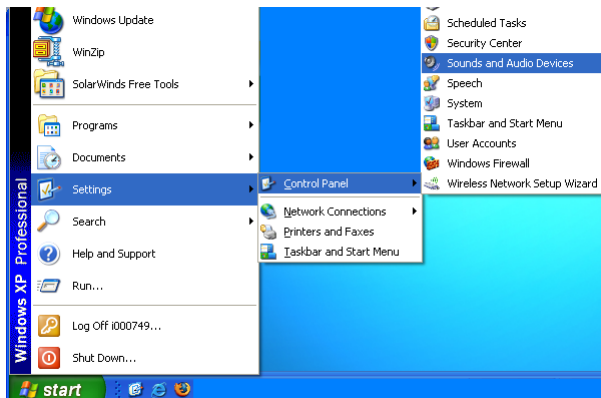
1. Connect the USB-input of the USB Box to a free USB-socket on your computer and turn it on/make sure it is powered on.



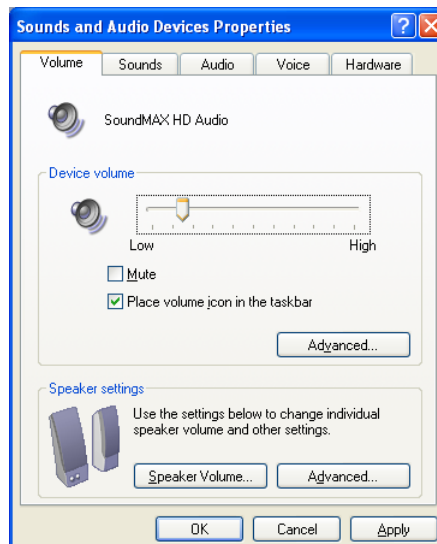
Please note: Connection should be made to an USB-socket of your computer directly. Connecting to USB-hubs or switches can cause problems.

2. The “new hardware found assistant” will detect the unit and announces it as a “USB loudspeaker”.

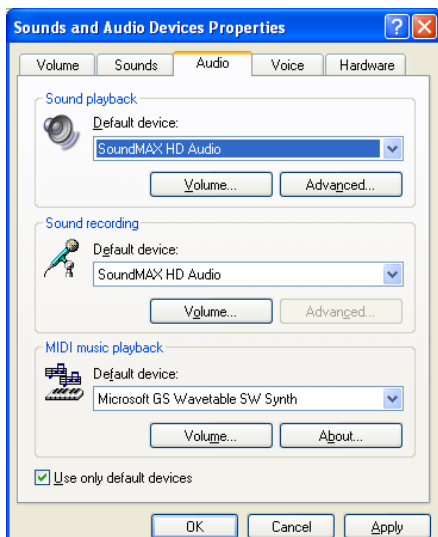
3. open the System menu via “Start” (Windows key)
→ Settings
→ Control Panel
→ Sound and Audio Devices



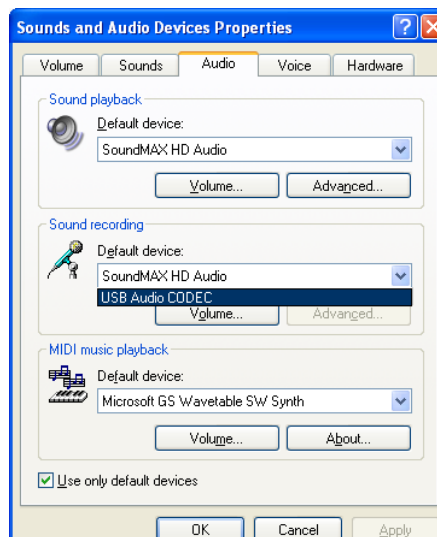
4. In the control panel open the “Sound and audio” menu.



5. In the Sounds and Audio panel select the Audio tab. In the Replay section select your sound card from the pull-down lists (usually preselected).



6. Select the USB Audio CODEC from the pull down list in the Playback section. Make sure your sound card is selected for Recording.



7. Confirm your selections by clicking the OK button and close the control panel windows.

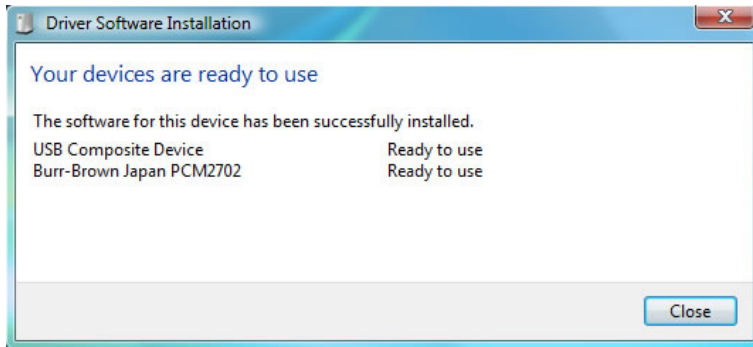
Connecting to a Computer (e. g. with Microsoft™ Windows™ VISTA™)

1. Connect the USB-output of the USB Box to a free USB-socket on your computer and turn it on/make sure it is powered on.



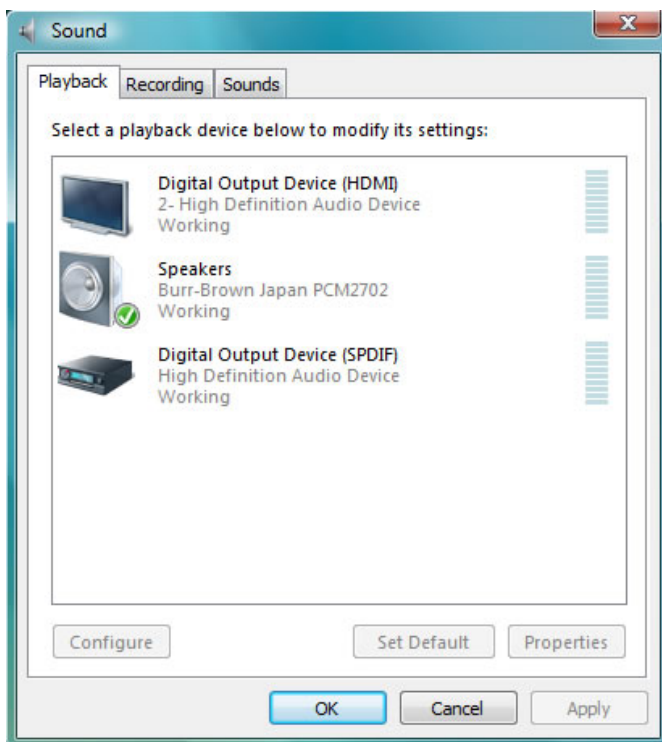
Please note: Connection should be made to an USB-socket of your computer directly. Connecting to USB-hubs or switches can cause problems.

2. The “new hardware found assistant” will detect the unit and announces it as “**Burr-Brown PCM2702**”.



3. Open the Playback panel. → **Start** → **Control Panel** → **Hardware and Sound** → **Sound** → **Playback**

In the Playback panel **Burr-Brown PCM2702** (announced as Speakers) should be selected (usually preselected).



4. Click the OK button and close the control panel windows.

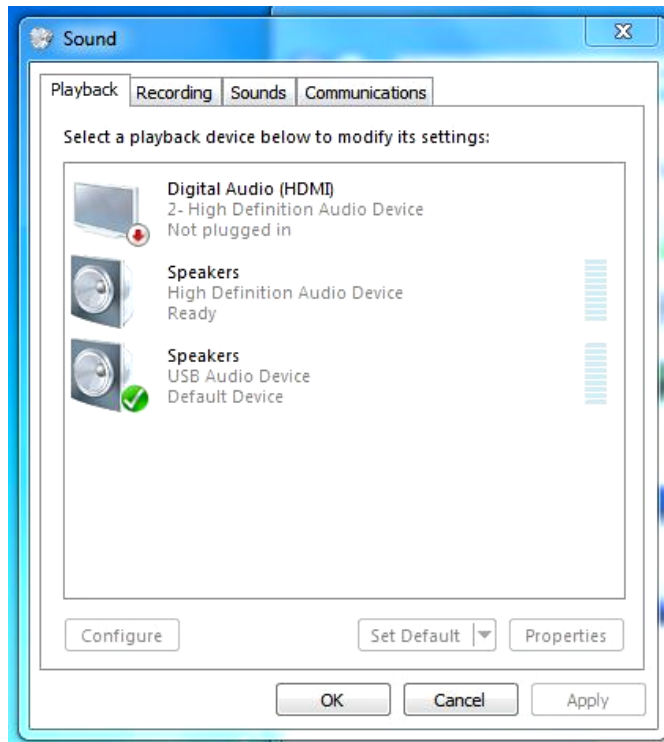
Connecting to a Computer (e. g. with Microsoft™ Windows 7™)

1. Connect the USB-output of the USB Box to a free USB-socket on your computer and turn it on/make sure it is powered on.



Please note: Connection should be made to an USB-socket of your computer directly. Connecting to USB-hubs or switches can cause problems.

2. Open the Playback panel. → **Start** → **Control Panel** → **Hardware and Sound** → **Sound** → **Playback**
In the Playback panel **USB Audio Device** (announced as Speakers) should be selected (usually preselected).



3. Click the OK button and close the control panel windows.

Connecting to a Computer (e. g. with Mac OS™ Safari™)

1. Connect the USB-output of the USB Box to a free USB-socket on your computer and turn it on/make sure it is powered on.



Please note: Connection should be made to an USB-socket of your computer directly. Connecting to USB-hubs or switches can cause problems.

2. Open the System Preferences panel and select **SOUND**.



3. Open the Sound panel and select **Output**.

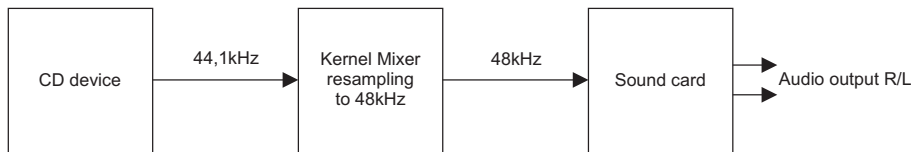


4. Select **Burr-Brown Japan PCM2720** in the Output panel.

3. Confirm the settings and close all windows.

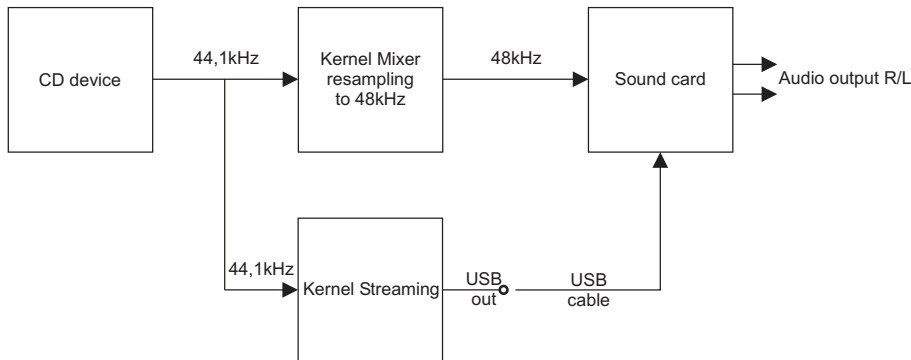
Pro-Ject Direct Streaming - Kernel Streaming (e. g. with Microsoft™ Windows™)

Normally the audio data that comes from CD gets resampled by the Windows® Kernel Mixer. This conversion process deteriorates the audio performance.



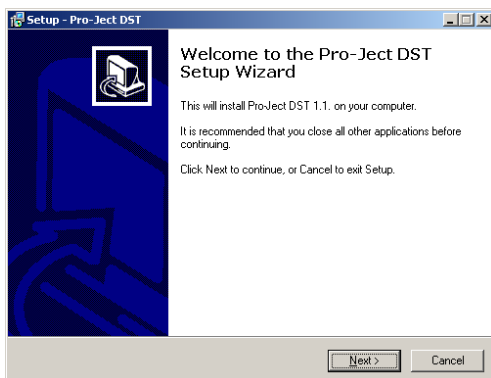
Pro-Ject Direct Streaming allows bit-by-bit processing. This avoids unwanted signal alteration of the original signal through by-passing the Windows® Kernel Mixer of your PC.

For replay a suitable software player, like for instance foobar2000, will be needed.

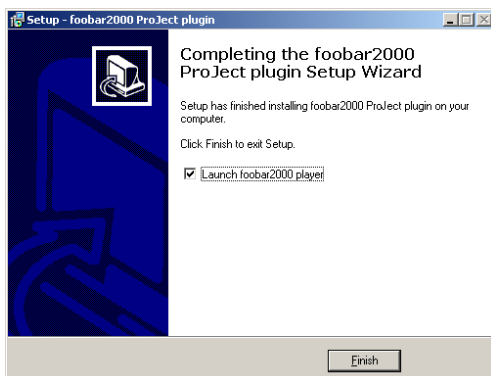


Loading the foobar2000 software:

1. Insert the CD in the drive of your computer. The installation will start automatically.
2. Follow the instructions given by the Setup Wizard



3. Complete the installation by clicking the **Finish** button and restart your computer



Please be aware that downloads from the Internet are made entirely at your own risk. Under no circumstances can we carry responsibility or provide support for software products sourced from the internet or for any damage or problems arising from the use thereof. All downloads should be checked with an up-to-date anti-virus programme. License fees may be applicable.